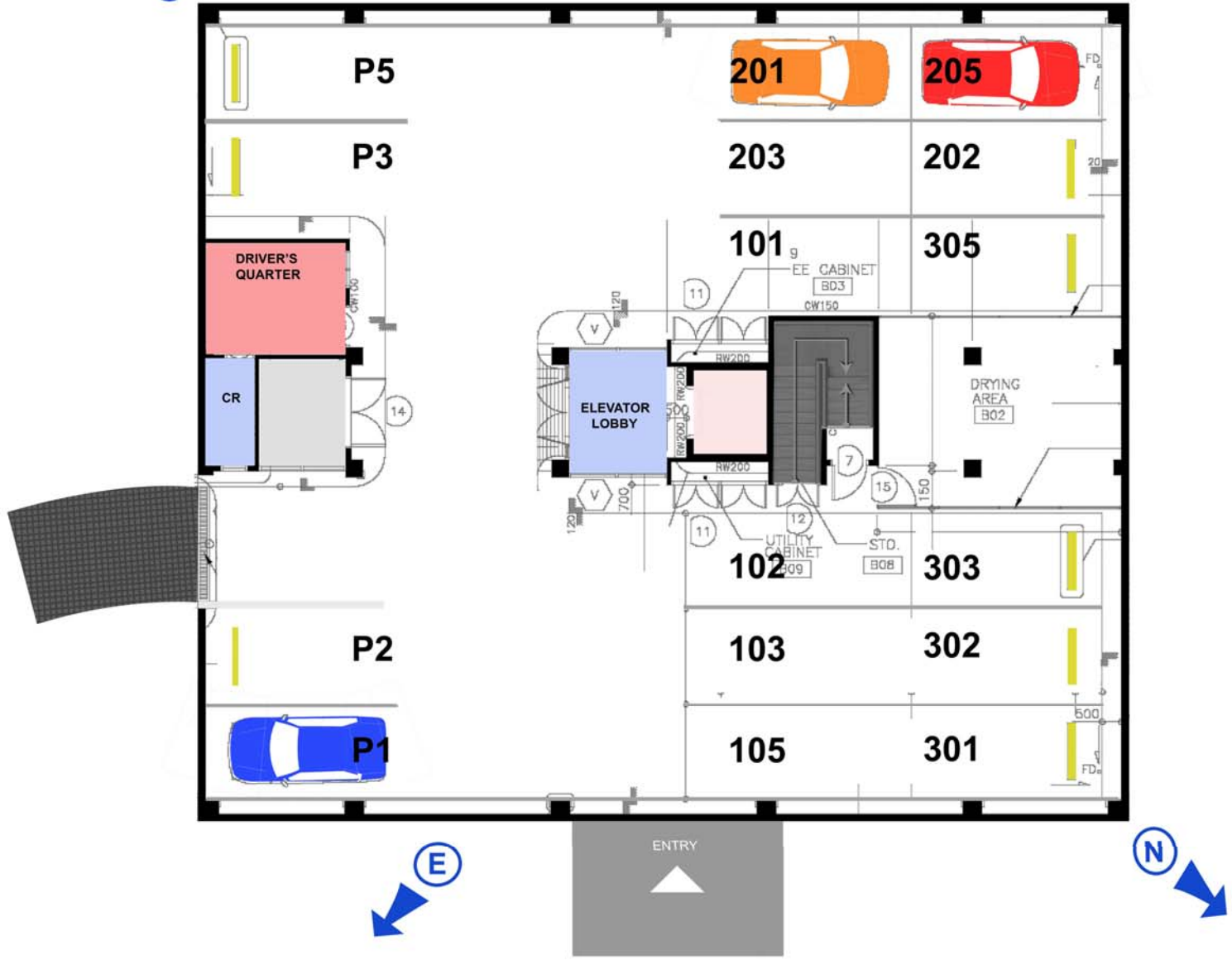




# BUILDING C BASEMENT



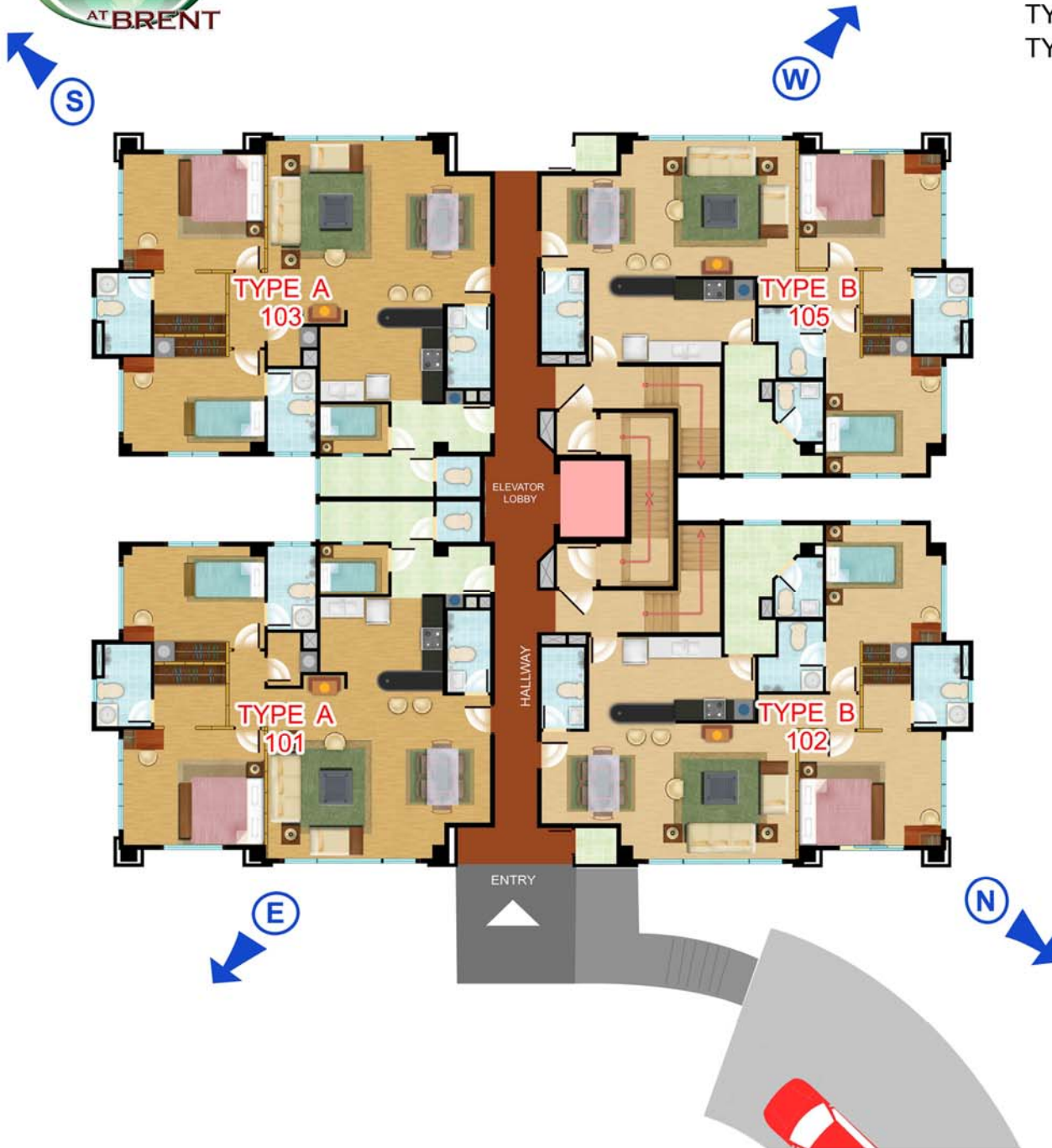


# BUILDING C GROUND FLOOR

FLOOR AREA:

TYPE A = 111 sq.m.

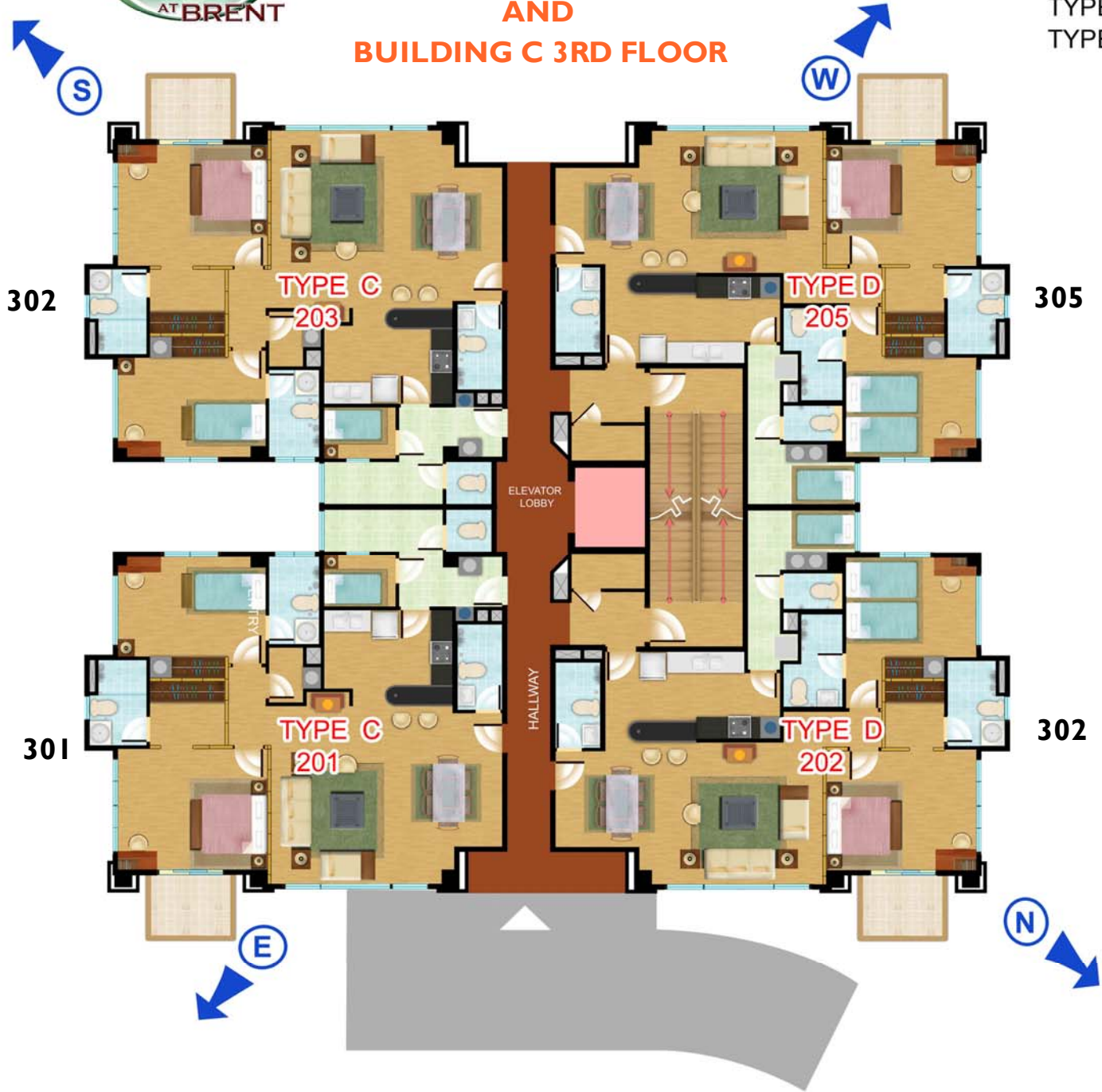
TYPE B = 102 sq.m.





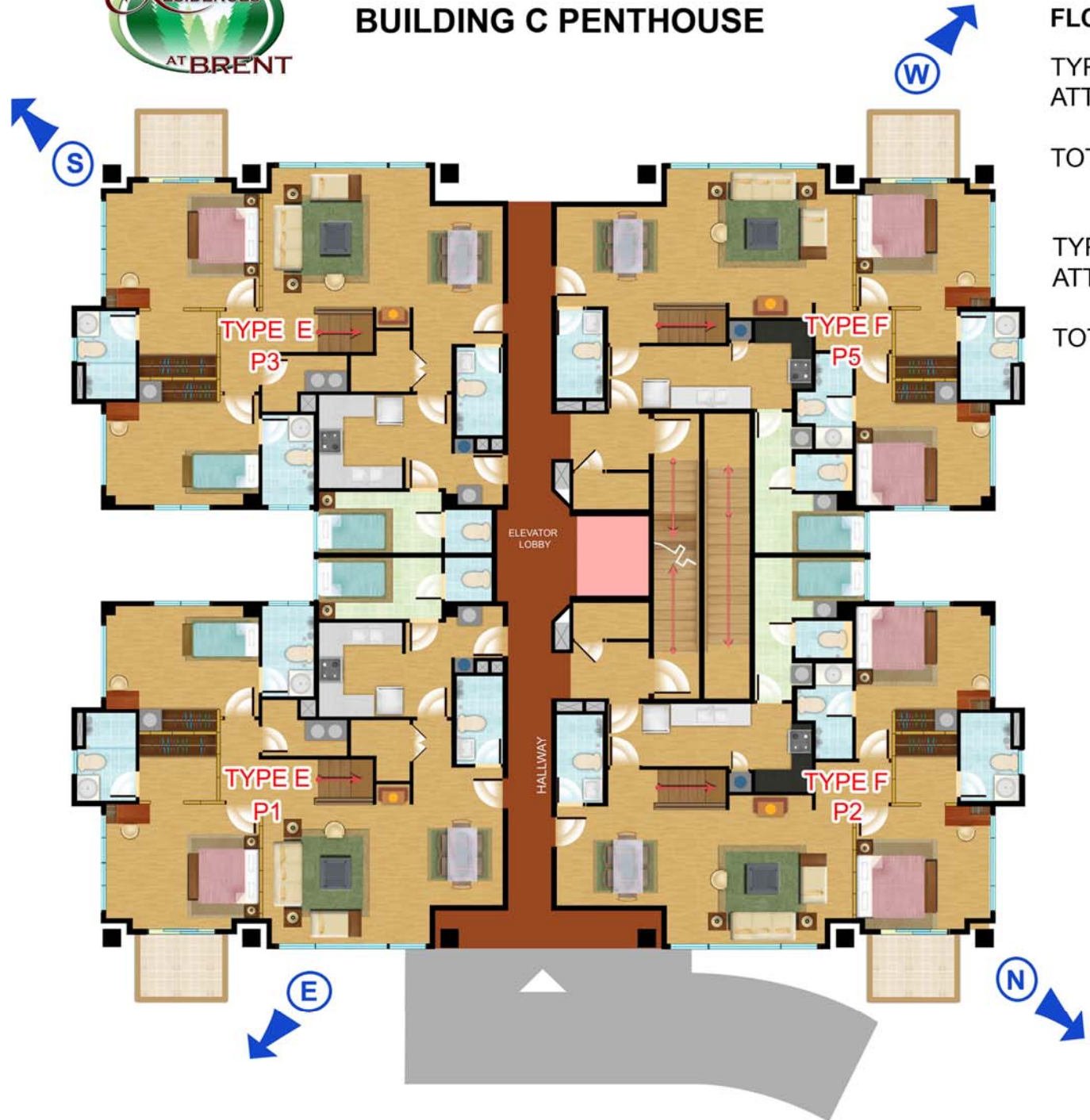
**BUILDING C 2ND FLOOR  
AND  
BUILDING C 3RD FLOOR**

**FLOOR AREA:**  
TYPE C = 116 sq.m.  
TYPE D = 108 sq.m.





# BUILDING C PENTHOUSE

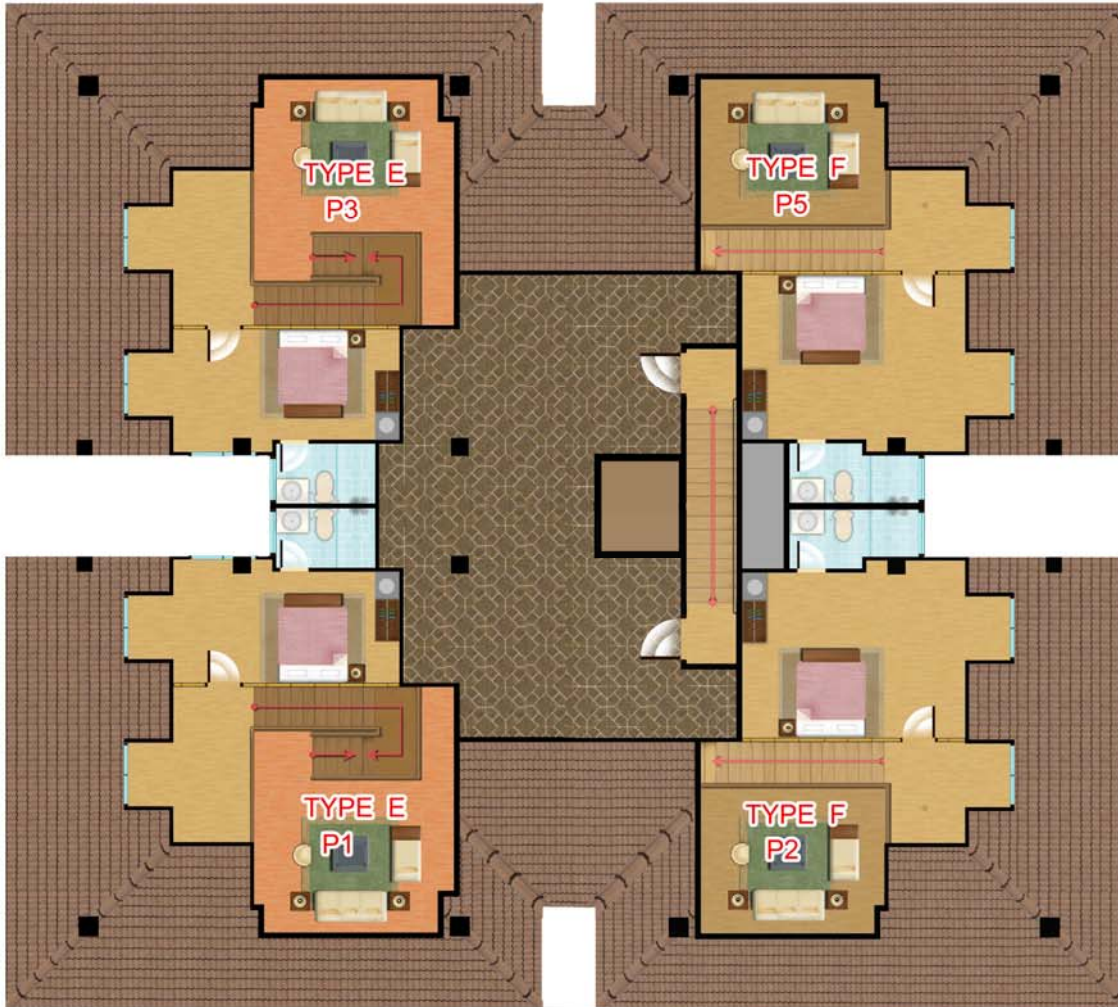


**FLOOR AREA:**

TYPE E P1, P3	= 114
ATTIC	= 42
<hr/>	
TOTAL - TYPE P1,P3	= 156 sq. m.
TYPE F P2,P5	= 106
ATTIC	= 46
<hr/>	
TOTAL - TYPE P2,P5	= 152 sq. m.



# BUILDING C ATTIC



## FLOOR AREA:

TYPE E P1, P3 = 114  
ATTIC = 42

-----  
TOTAL - TYPE P1,P3 = 156 sq. m.

TYPE F P2,P5 = 106  
ATTIC = 46

-----  
TOTAL - TYPE P2,P5 = 152 sq. m.